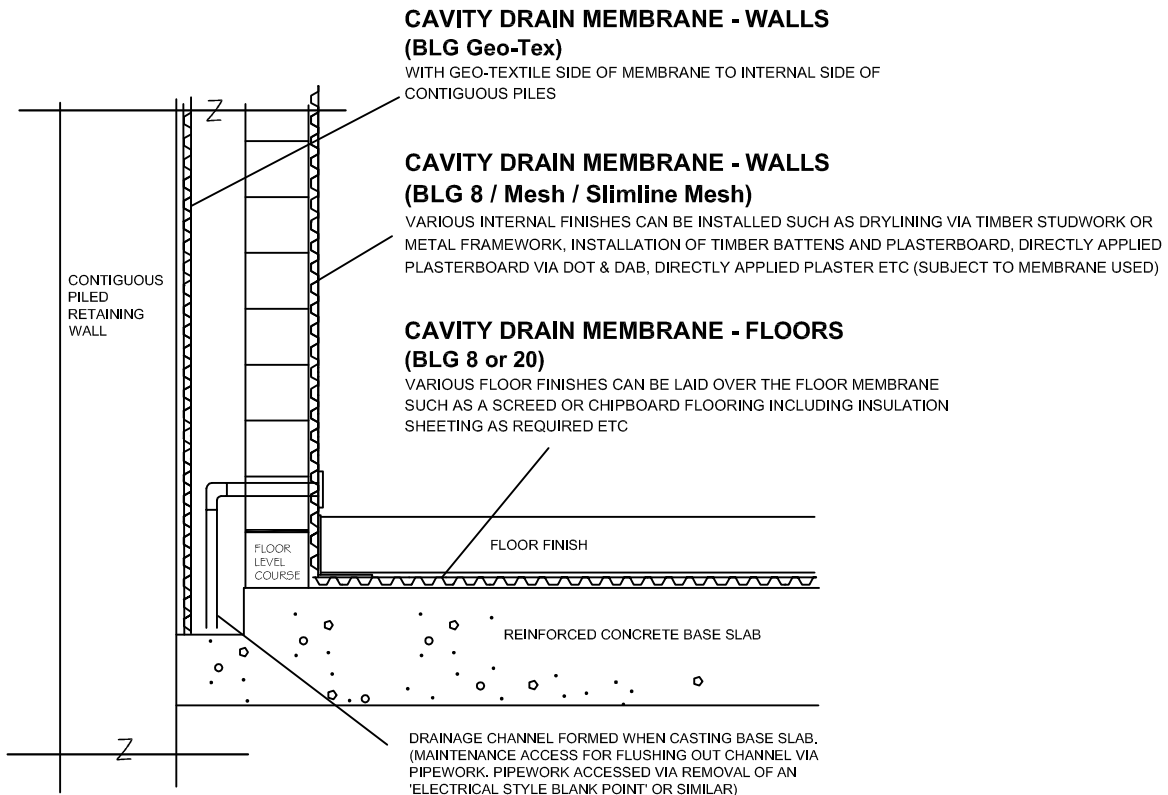


SECTION DETAIL - INTERNAL SYSTEM (CONTIGUOUS PILED RETAINING WALL)



NOTE - PERPENDICULAR MORTAR JOINTS TO 'FLOOR LEVEL COURSE' BRICKWORK MUST BE LEFT OPEN EVERY TWO BRICK LENGTHS.

