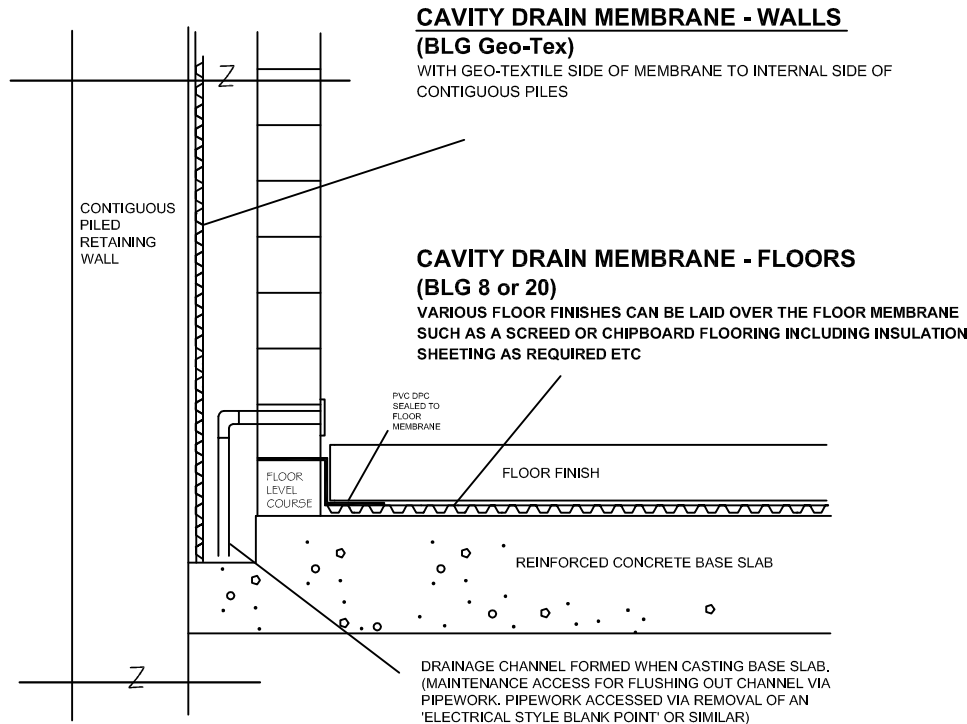


# SECTION DETAIL - INTERNAL SYSTEM (CONTIGUOUS PILED RETAINING WALL)



**NOTE - PERPENDICULAR MORTAR JOINTS TO 'FLOOR LEVEL COURSE' BRICKWORK MUST BE LEFT OPEN EVERY TWO BRICK LENGTHS.**

